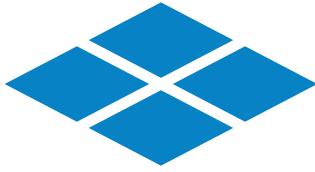




*World class
quality from
America's Heartland*



HUMANE™
EQUINE PRODUCTS GROUP



HUMANETM
EQUINE PRODUCTS GROUP

The Humane Advantage

Horse owners across the world choose Humane because of our unwavering commitment to the well-being of their horses. For decades Humane has designed and manufactured high quality, American made products in order to help horse owners provide a safe and clean environment for their animals at an incredible value.



Superior Products From Humane

All Humane products start with the highest quality recycled rubber buffings and are manufactured utilizing a vulcanization process which ensures every mat is strong, durable and built to last. The Humane process also allows us to guarantee that every mat provides a full range of built in benefits.

TreadsafeTM (diamond pattern) traction control improves footing in wet & dry conditions

Non-absorbent, anti-fungal, anti-bacterial

Acts as a thermo barrier against freezing and thawing

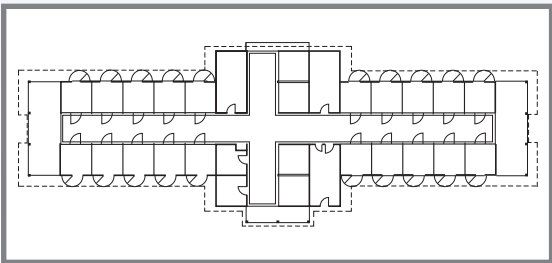
Will not curl or buckle

Precisely cut interlocking seams

Just the right texture reduces stress on joints and tendons without sacrificing strength or durability

Humane Custom Design Services

Humane has decades of experience partnering with horse owners to develop custom solutions for their existing structures or new projects. We ask the right questions and gather all the relevant information so that we can suggest the best product or design a custom solution just for you. Our production team averages over 30 years at Humane with experience to walk you through each step of the custom process as we plan, manufacture and ship you your custom solution.



PLANNING

Consult with you on your plans, specifications & timeline

Collect Blueprints and/or accurate measurements of the project

Our Design Engineers will layout a custom plan detailing every mat in the project

Detailed quote with exact pricing, timeline & shipping costs



PRODUCTION

Custom plan is converted into programming language

Production is scheduled and Waterjet programs entered

Precision waterjet cuts exact pieces to specifications

Custom pieces are stacked and labeled to correspond with the design layout



SHIPPING & INSTALLATION

Pallets are loaded in order with all the diagrams included

Specifications set for special requests
eg: (flat bed, lift gate , guaranteed delivery)

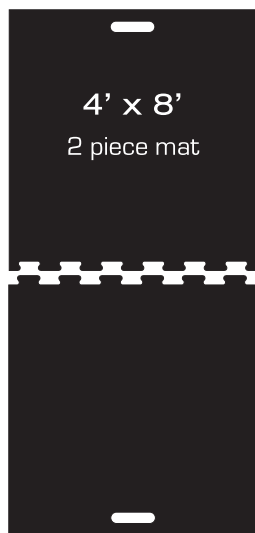
Your custom layout arrives on site/on time with diagrams and instructions for an easy no hassle installation

Other Equine mats from Humane Manufacturing

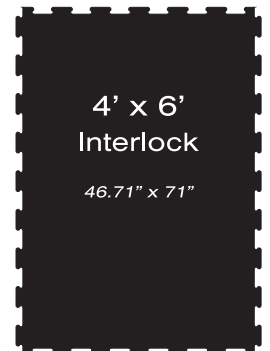
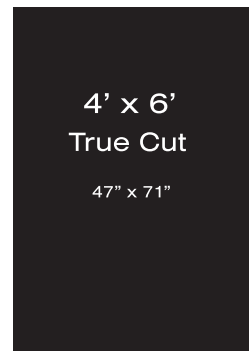
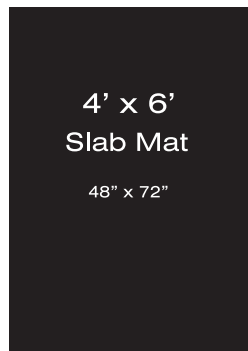


Button Mats

For use in wash stalls or other areas where extra traction is needed



Portable Stall Mats



TreadSafe™



Diamond Pattern

BIGLOK™



LOKTUFF™



Technical Specifications:

Tensile Strength (ASTM D-412) - 800 lbs
 Recycled Material Purity - 99.5%
 Durometer Reading - 60-63

Coefficient of Friction (ASTM C1028) - Dry .85, Wet .95
 Recycled Material - 94%
 Standard thicknesses - 3/8", 1/2", 3/4"



HUMANE™
 EQUINE PRODUCTS GROUP

Humanemfg.com